



Tech Pro  
adhesive solutions ●



# OPHTHALMIC PRODUCTS

[www.techpro-ad.com](http://www.techpro-ad.com)



## Standard Blue

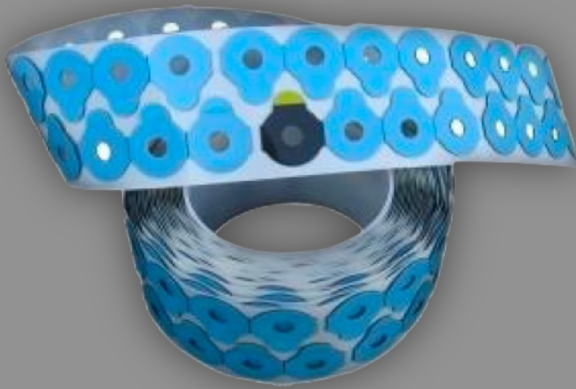
also available with Green or White liner

### Description

A classic product made from 0.8mm foam with long ageing acrylic adhesive. Originally developed for mineral lenses, this is an excellent general-purpose pad used extensively around the world. This product can also be supplied with green or white liner if required.

### Specifications

Adhesive (Cup Side)	Acrylic
Adhesive (Lens side)	Acrylic
Carrier	Closed Cell PE Foam 0.8 mm
Liner	Siliconized PE
Shelf Life	12 months from dispatch when stored in original cartons at 21° C and under 50% relative humidity



## Red Five

### Description

Utilising "SecurEdge" ® foam with a unique support structure, Red Five gives excellent resistance to torque combined with good conformability. Modified acrylic adhesive bonds well with a wide range of lenses currently available.

### Specifications

Adhesive (Cup Side)	Acrylic
Adhesive (Lens side)	Acrylic
Carrier	Closed Cell PU (Polyurethane) 0.8 mm
Liner	Siliconized PE
Shelf Life	12 months from dispatch when stored in original cartons at 21° C and under 50% relative humidity





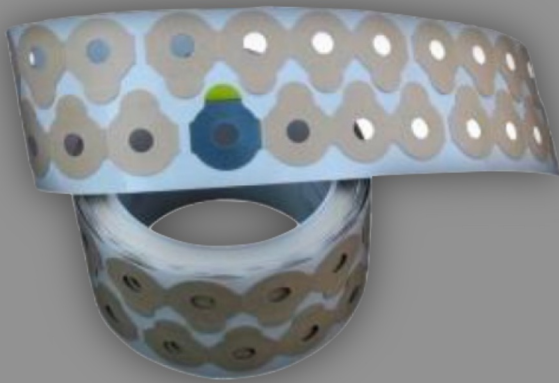
# Super Type

## Description

One of our most popular products, this 0.4mm thick material has a strong PVC carrier which reduces the risk of axis problems. Its synthetic adhesive is compatible with many types of coating and is easily removed, leaving no residue on both organic and mineral lenses; the synthetic rubber provides good adhesion on coated lenses.

## Specifications

Adhesive (Cup Side)	Synthetic Rubber
Adhesive (Lens side)	Synthetic Rubber
Carrier	250 micron Vinyl
Total thickness	0.38 mm
Top Liner	Tan paper
Bottom Liner Siliconized PE	Siliconized PE
Shelf Life	12 months from dispatch when stored in original cartons at 21° C and under 50% relative humidity



# S.I.P – GOLD

## Description

Surface Improvement Pads GOLD are designed to adhere to lenses with a Super Hydrophobic Coating. This kind of lenses are specified as Super Hydrophobic or Oleophobic lenses. SIP GOLD has a special engineered adhesive that attaches to the latest generation Super Hydrophobic coatings. It is provided with a conformable filmic backing that forms perfectly to the convex of the lens. Use your regular edging pad on top of this SIP GOLD PAD.

## Specifications

Adhesive	Special Engineered LSE
Backing	Comfortable yellow filmic (single sided)
Total Thickness	0.09mm
Liner	Transparent PET
Shelf Life	12 months from dispatch when stored in original cartons at 21° C and under 50% relative humidity





## Surface Saver Discs

available in 30mm and 35mm

### Description

A conformable blue tape with good adhesion to lens materials and clean removal. Used to protect the reverse of the lens from possible damage by the chuck during the edging process. Available in a range of shapes and sizes to suit.

### Specifications

Adhesive	Acrylate
Backing	Blue Polyethylene Film
Total Thickness	0.01mm
Liner	Siliconized Paper
Shelf Life	12 months from dispatch when stored in original cartons at 21°C and under 50% relative humidity



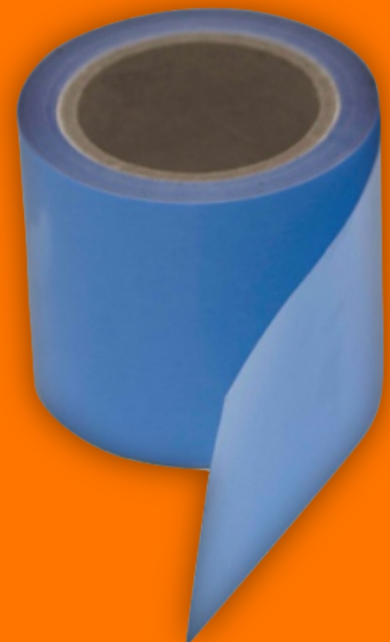
## Blokkit

### Description

Blokkit is a lined, highly conformable, blue lens block protection tape specifically designed to be used with alloy blocking systems on all types of lenses. Blokkit securely holds both the lenses and the alloy blocking medium, preventing premature releases during generation in both wet and dry processes, and does so on a variety of generating equipment. After generation, Blokkit unblocks quickly and easily from the alloy. The tape detaches from lenses easily and residue free, leaving lense alignment markings in place. Blokkit is highly conformable, allows for even the highest index lenses to be taped securely.

### Specifications

Adhesive	Acrylic
Backing Material	Conformable film
Total Thickness	0.13mm
Elongation	450%
Adhesion	26oz (plastic); 24oz (glass)
Roll Dimensions	4" x 36 yd.
Shelf Life	12 months from dispatch when stored in original cartons at 21°C and under 50% relative humidity





## Edge-it®

### Surface Protection Pads

### Surface Saver Discs

Surface Saver Discs from **Edge-it®** provide an economical and effective way to avoid quality problems during the edging process.

How does it work?

Placed on the reverse side of the lens, Surface Saver Discs provide complete protection against any possible scratching or marking when the lens comes into contact with the machine. Their purpose is mechanical protection of the lens by masking off the central area.

30 and 35mm diameter are the most popular sizes that we supply from stock. Other sizes and shapes can easily be made to suit your process.

**Edge-it®** Surface Saver Discs include a fingerlift or "dry-edge" to make removal quick and minimise hand contact.

## Blokkit

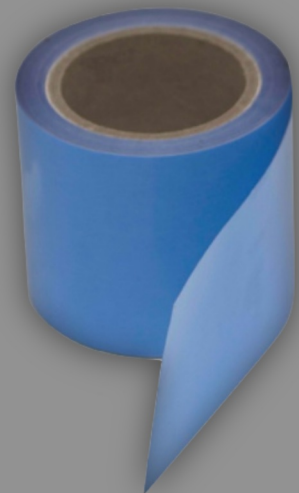
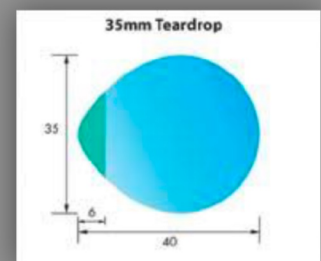
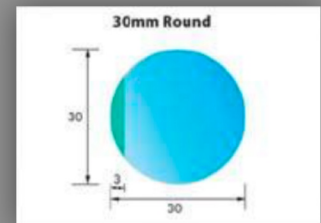
Our blocking tape is a lined, highly conformable blue filmic tape coated with acrylic adhesive which is designed to be used with all types of lenses. The tape holds securely to both the lens and the alloy blocking medium, avoiding unwanted early detachment during processing. After surface generation the tape removes cleanly and easily. No adhesive residue is left and lens markings are unaffected.

**Edge-it®** blocking tape is a quality product at a competitive price supplied in 33m, 50m or 100m rolls as required. 5m sample rolls are available for testing.

**Edge-it®** manufactures edging pads and protective products for the Ophthalmic industry. We supply the widest range of shapes to suit popular edging machines for manufacturers such as Briot\*, Weco\*, Nidek\* and others.

As a manufacturer we are uniquely positioned to tailor our products to your specific requirements. So, if you don't see what you want here – please ask! If the numbers add up, we'll make it!

\*Briot, Weco, and Nidek are Trademarks and expressly acknowledged as the property of their respective owners.



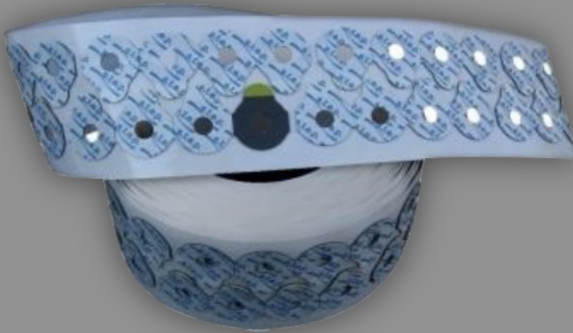


(S.T.E.P.®)

## Special Torque-resistant Edging Pad

### Description

This 0.8 mm PE foam pad features a unique internal support film to prevent stretching and thus reduce axis problems. The high-tack acrylic adhesive removes cleanly and in one piece thanks to our double-fingerlift. A premium product suitable for all kinds of lenses.



### Specifications

Adhesive (Cup Side)	Acrylic
Adhesive (Lens Side)	Acrylic
Carrier	Closed Cell PE foam 0.8mm
Liner	White PE or White Glassine Paper
Temp. Resistance (Max)	80°C
Shelf Life	12 months from dispatch when stored in original cartons at 21°C and under 50% relative humidity

## S.T.E.P.® – YLS

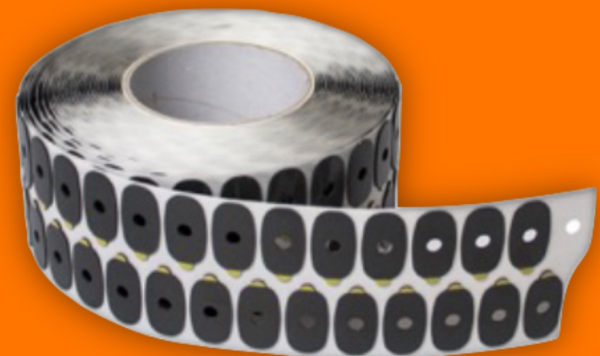
### Description

Special Torque-resistant Edging Pads. This PE foam pad features a unique internal reinforcement to prevent stretching and thus reduce axis problems. Moreover it is provided with the latest hybrid adhesive technology. One side has a special engineered adhesive that attaches to anti-reflective coatings and the other side has an adhesive specially for the block side. Both adhesives are clean removable. This pad has a special engineered adhesive for the lens side, indicated by a yellow pull tap. The other side is specially designed to adhere to the block and is indicated by a red pull tap.

Note: This pad is only suitable for super hydrophobic or oleophobic lenses.

### Specifications

Adhesive	Hybrid adhesive technology
Carrier	Conformable reinforced closed cell PE 0.9mm
Total Thickness	1.0mm
Liner	White Glassine Paper and PET
Temp. Resistance (Max)	90°C
Shelf Life	12 months from dispatch when stored in original cartons at 21°C and under 50% relative humidity





# Nose Pads

## Explanation

Self-adhesive nose pads are often made out of uncomfortable hard polyurethane that discolors rapidly, and is also not UV ageing resistant. Most adhesives on this kind of products are rubber based. Rubber is also not ageing or UV resistant and will discolor within a few months.

## Product Description

This Nose pad is made out of a very soft comfortable clear silicon with a high tack acrylic adhesive. Both materials are UV plus ageing resistant and the adhesive also adheres on difficult to bond surfaces. This long lasting nose pad is available in a sheets of 10 pieces in size 13mm, 15mm, 17mm and 19mm.

## Instructions for use

It is important that you clean the frame Nose Pad surface with alcohol and wait till the alcohol is evaporated. Avoid products like benzene and turpentine. You will have 50% adhesion in 10 minutes and 100% in 72hrs.



## Specifications

Adhesive	Acrylic LSE (low surface energy)
Carrier	Conformable clear non-ageing silicone
Total Thickness	0.85 mm
Liner	Transparent PET
Temperature	+90°C
Shelf Life	12 months from dispatch when stored in original cartons at 21°C and under 50% relative humidity



# Surface Improvement Pad (S.I.P.)

## Introduction

Today, there is a wide range of lens coatings on the market. Despite their undeniable benefits they provide, they pose huge problems for laboratories, especially in the edging process.

S.I.P. from Edge-it® is a unique, low-cost material that enables labs to process all kinds of lenses, including those treated with a super-hydrophobic coating.

## What is S.I.P.?

S.I.P.s are made from single-sided, transparent PET film that is applied to the lens before the edging pad.

## How does it work?

S.I.P.s mask off a large part of the lens and provide a stable base for the edging pad to stick to securely.

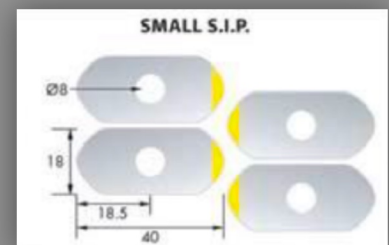
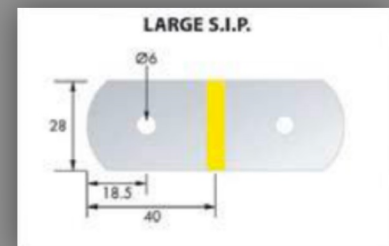
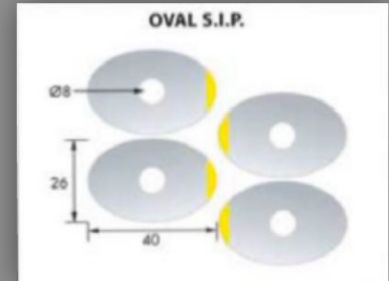
## Can it be used on both sides?

Yes, S.I.P. works equally well on the reverse of the lens as a protective tape. S.I.P. pads are available in full-eye and half-eye versions. They can be supplied in rolls or as pairs to dispatch to your customer with his lenses. Unlike more expensive competitors, all S.I.P. products have a fingerlift for easy, clean removal after use.

## Edge-it®

Edge-it® manufactures edging pads and protective products for the Ophthalmic industry. We supply the widest range of shapes to suit popular edging machines for manufacturers such as Briot\*, Weco\*, Nidek\* and others.

As a manufacturer, we are uniquely positioned to tailor our products to your specific requirements. So, if you don't see what you want here, please ask! If the numbers add up, we'll make it!

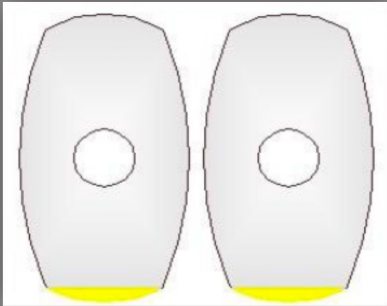


\*Briot, Weco, and Nidek are Trademarks and expressly acknowledged as the property of their respective owners.

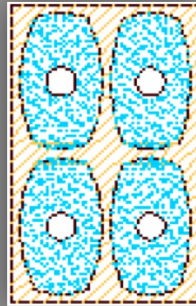




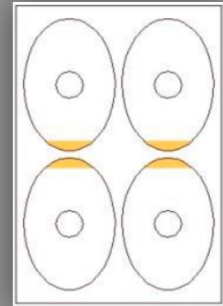
## Surface Improvement Pads (S.I.P.)



S.I.P. 4022.2



S.I.P. 4022.4



S.I.P. 4026.4

### Description

Surface Improvement Pads are designed to adhere strongly to lenses and provide a secure area on to which a conventional edging pad may be mounted. S.I.P can be used on the convex side as well as the concave side of the lens.

### Specifications

Adhesive

Hybrid adhesive technology

Backing

Conformable reinforced closed cell PE 0.9mm

Total Thickness

1.0mm

Liner

90°C

Shelf Life

12 months from dispatch when stored in original cartons at 21°C and under 50% relative humidity



# Edge-it®

## Lens Edging Pads

As Europe's leading manufacturer we have developed a range of products to meet the needs of end-users and OEM's throughout the industry. With a flexibility unrivalled we offer all our product qualities with a double fingerlift to aid clean removal and avoid adhesive contamination. All our raw materials are manufactured to our exacting standards in Europe or the USA at facilities registered to ISO9001 or higher.

Edge-it® manufactures edging pads and protective products for the Ophthalmic industry. We supply to widest range of shapes to suit popular edging machines for manufacturers such as Briot\*, Weco\*, Nidek\* and others.

As a manufacturer, we are uniquely positioned to tailor our products to your specific requirements. So, if you don't see what you want here, please ask! If the numbers add up, we'll make it!

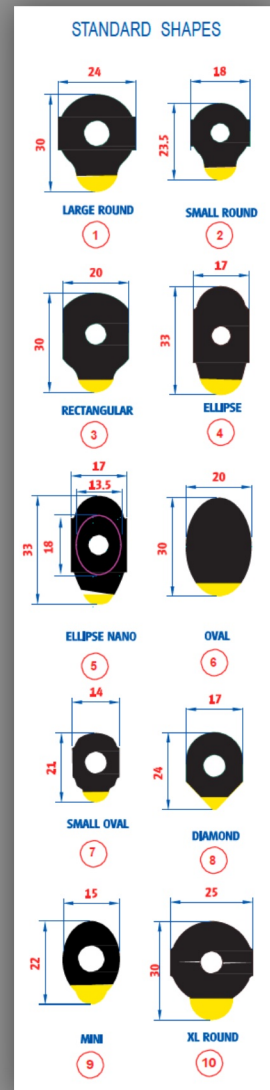
## Econopad

An entry-level pad for general purpose applications. European quality material at a very competitive price for the high volume lab.

## SecurEdge Plus

Designed specifically for use with Super-Hydrophobic lenses; this 0.8mm PU product has pushed the performance of edging pads to new levels. Pads are printed on one side to indicate which of the unique adhesives is compatible with the lens.

\*Briot, Weco, and Nidek are Trademarks and expressly acknowledged as the property of their respective owners.





Tech Pro  
adhesive solutions ●

Making things better together

TechPro Group Ltd.  
Unit 1-8, 17/F, Favor  
Industrial Centre,  
2-6 Kin Hong Street,  
Kwai Chung, New Territories,  
Hong Kong  
Tel: +852 2347 1959  
Fax: +852 2349 8553  
Contact Person: Tom Ros  
[tom.ros@techpro-ad.com](mailto:tom.ros@techpro-ad.com)  
[info@techpro-ad.com](mailto:info@techpro-ad.com)